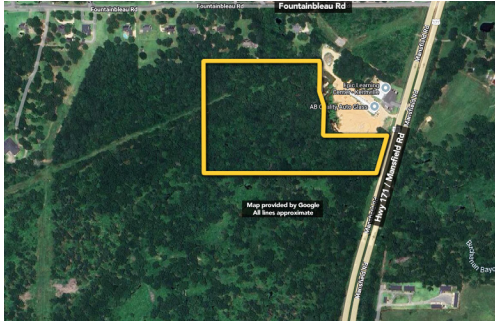


LOUISIANA & TEXAS LAND AUCTIONS



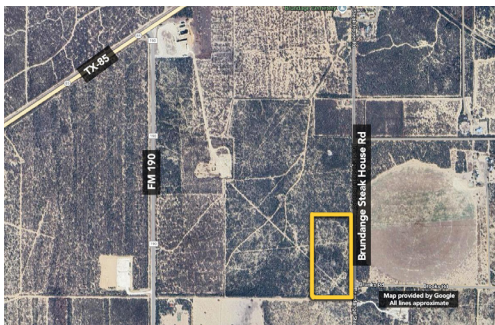
KEITHVILLE, LA
Mansfield Rd
17.75+/- ac Zoned Agricultural
Nominal Opening Bid: \$25,000



SHREVEPORT, LA
Standard Oil Rd
26.251+/- ac Zoned Agricultural
Nominal Opening Bid: \$25,000



ARLINGTON, TX
2011 Loyd Dr
0.17+/- ac Residential Lot
Nominal Opening Bid: \$500



BRUNDAGE, TX
Brundage Steak House Rd
20+/- ac Commercial Land
Nominal Opening Bid: \$50,000



COTULLA, TX
S Farm to Market 469
10+/- ac Commercial Land
Nominal Opening Bid: \$5,000



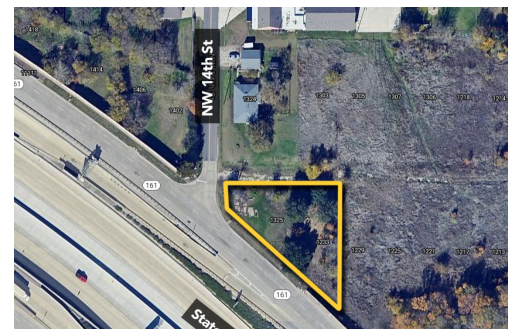
FORT WORTH, TX
926 N Houston St
0.02+/- ac
Nominal Opening Bid: \$500



FORT WORTH, TX
312 E Northside Dr
0.05+/- ac Residential Lot
Nominal Opening Bid: \$125,000



FORT WORTH, TX
1008, 1012, 1016 Oak Grove Rd
12.61+/- ac Commercial Land
Nominal Opening Bid: \$300,000



GRAND PRAIRIE, TX
1325 W Church St
0.17+/- ac Residential Lot
Nominal Opening Bid: \$15,000

Bid Online January 27 - 29 at **auctionnetwork.com**

800.801.8003
williamsauction.com/Land





GRAND PRAIRIE, TX
 1202 Dalworth St
 0.05+/- ac Residential Lot
Nominal Opening Bid: \$5,000



GRAND PRAIRIE, TX
 1435 W Polo Rd
 0.45+/- ac Commercial Land
Nominal Opening Bid: \$15,000



GRAPEVINE, TX
 4400 Lakeside Pkwy
 5.41+/- ac Commercial Land
Nominal Opening Bid: \$325,000



HURST, TX
 10600 Trinity Blvd
 0.95+/- ac Commercial Land
Nominal Opening Bid: \$5,000



IRVING, TX
 9001 Rock Island
 0.03+/- acre
Nominal Opening Bid: \$5,000

QUICK TERMS

- "As-Is, Where-is," no contingencies to sale
- 5% Buyer's Premium (see website for property specific minimums)
- 10% Down Payment (\$5,000 minimum)
- See website for full Terms of Sale and Disclosures



**Scan to Sign Up
 for FREE
 Auction Alert Emails!**

Follow Us on Social @williamsauction



LA WILLIAMS & WILLIAMS WORLDWIDE REAL ESTATE, LLC, LIC. NO. BROK.995680340-CORP; KEITH W. BABB, LIC. NO. BROK.57901.A-ACT.; KEITH W. BABB-LA-AUCTIONEER-LA-0124. TX WILLIAMS & WILLIAMS WORLDWIDE REAL ESTATE, LLC; DAVID MONTALVO, LIC. NO. 595597.; KEITH W. BABB - TX - AUCTIONEER 6701. 5% BUYER'S PREMIUM.